

ASTRUM Techno Consultants Pvt. Ltd.

From Vision To Reality, We Engineer It All...

Astrum Techno Consultants Pvt. Ltd., is multidisciplinary engineering consultancy firm leading by **Mr. Sandeep Desale, Mr Swapnil Kurundwade & Mr. Sachin More** each having **14+ years of expertise** in Structural design of infrastructure projects based in Navi Mumbai. With a strong focus on quality, safety, and innovation, we provide comprehensive design, structural health monitoring, rehabilitation services for bridges, buildings, and other critical infrastructure. Our team of seasoned experts works on complex projects with a focus on optimizing functionality, sustainability, and long-term durability.



Company Overview



Mission

To provide innovative and sustainable engineering solutions that meet the evolving needs of our clients and contribute to the development of infrastructure in India.



Values

Our core values are integrity, excellence, innovation, collaboration, and sustainability.



Commitment

We are committed to delivering high- quality services that meet the specific requirements of our clients and contribute to the success of their projects.

Leadership Team



Sandeep Desale

Director - Highway & Special Bridges

☎ 9702102565

M-Tech Structures - Over 14+ years of experience in Designing , Reviewing & managing major infrastructure projects like Railway bridges, highway bridges, Rail and Road Viaducts, buildings, etc.

Swapnil Kurundwade

Director - Railway & Highway Bridges

☎ 7820841534

M-Tech Structures - Over 14+ years of experience in Designing , Reviewing & managing major infrastructure projects like Railway & Highway bridges, Rail and Road Viaducts, ROB's, RUB's, Station buildings, FOB's, COP's etc.



Sachin More

Director - Metro & Special Bridges

☎ 9766926703

M-Tech Structures- Over 13+ years of experience in Designing & managing major infrastructure projects like Metro Bridges, Double decker Flyovers, Railway & highway bridges, Rail and Road Viaducts, buildings, etc.

Design Services

BRIDGES



Road Bridges
Rail & Metro Bridges
Elevated Corridors

- RCC / PSC / Steel
- Truss / Bow-string
- Long Span (Cable-Stay / Suspension)
- Arch Type etc.



ROAD

Highways
Expressways
Other Roads

- Geometric Design
- Pavement & Drainage Design
- Traffic Analysis & Road Safety
- DPR/Feasibility Report etc.

BUILDINGS



Residential
Commercial
Industrial

- Concept
- Architectural
- Structural



OTHERS

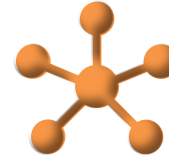
- Enabling Structures
- Staging & Shuttering
- Temporary Works
- Temporary Bridges

Project Services



TECHNICAL ASSISTANCE

- Technical Support for Execution
- Stakeholder Management



STRUCTURAL HEALTH MONITORING

- Sensor Integration
- Data Analysis
- Preventive Measures

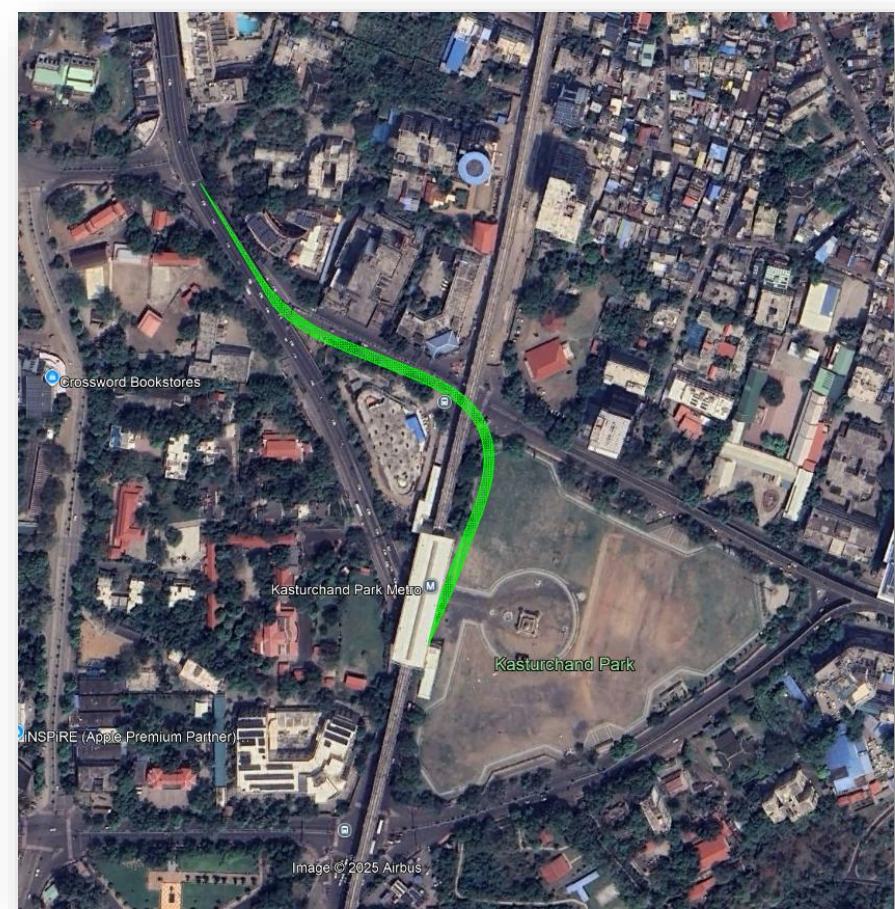


VALUE ENGINEERING & PRE-BID SERVICES

- Cost Optimization
- Material & Design Optimization
- Construction Process

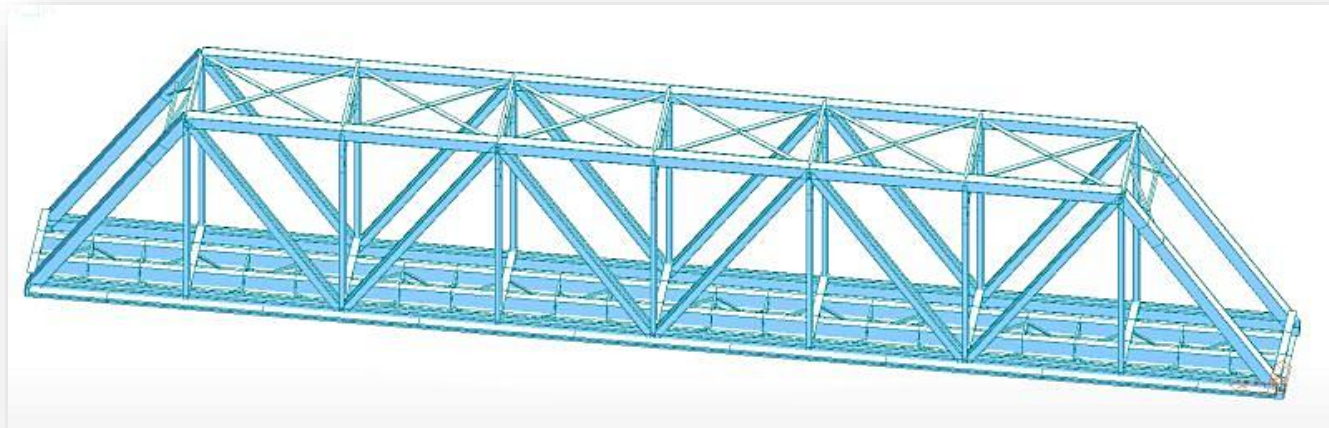
Our Projects - Owner's Engineering

Sr. No.	Project	Client
1.	Detail Design Consultancy for improvement to junction at NIT Building on NH-47 Nagpur-Betul Road in Nagpur (Sadar Flyover).	Maharashtra Metro Rail Corporation Limited.



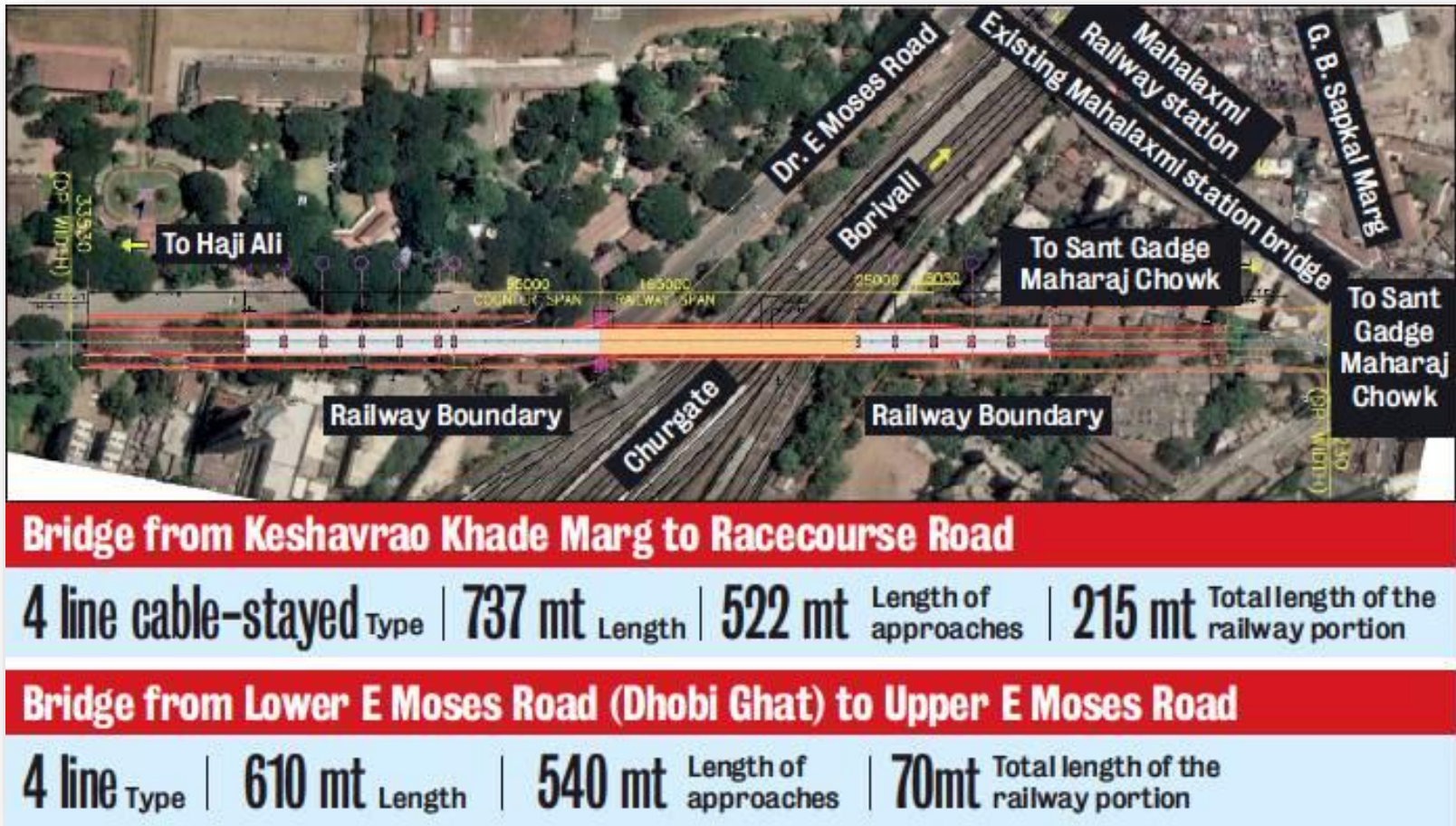
Our Projects - Detailed Design

Sr. No.	Project	Client
2	Detailed Design of Re-girdering for 9 bridges(Steel Truss, Semi-through & Plate Girder) under Eastern Railway through IIT/G.	IIT Guwahati / Eastern Railway



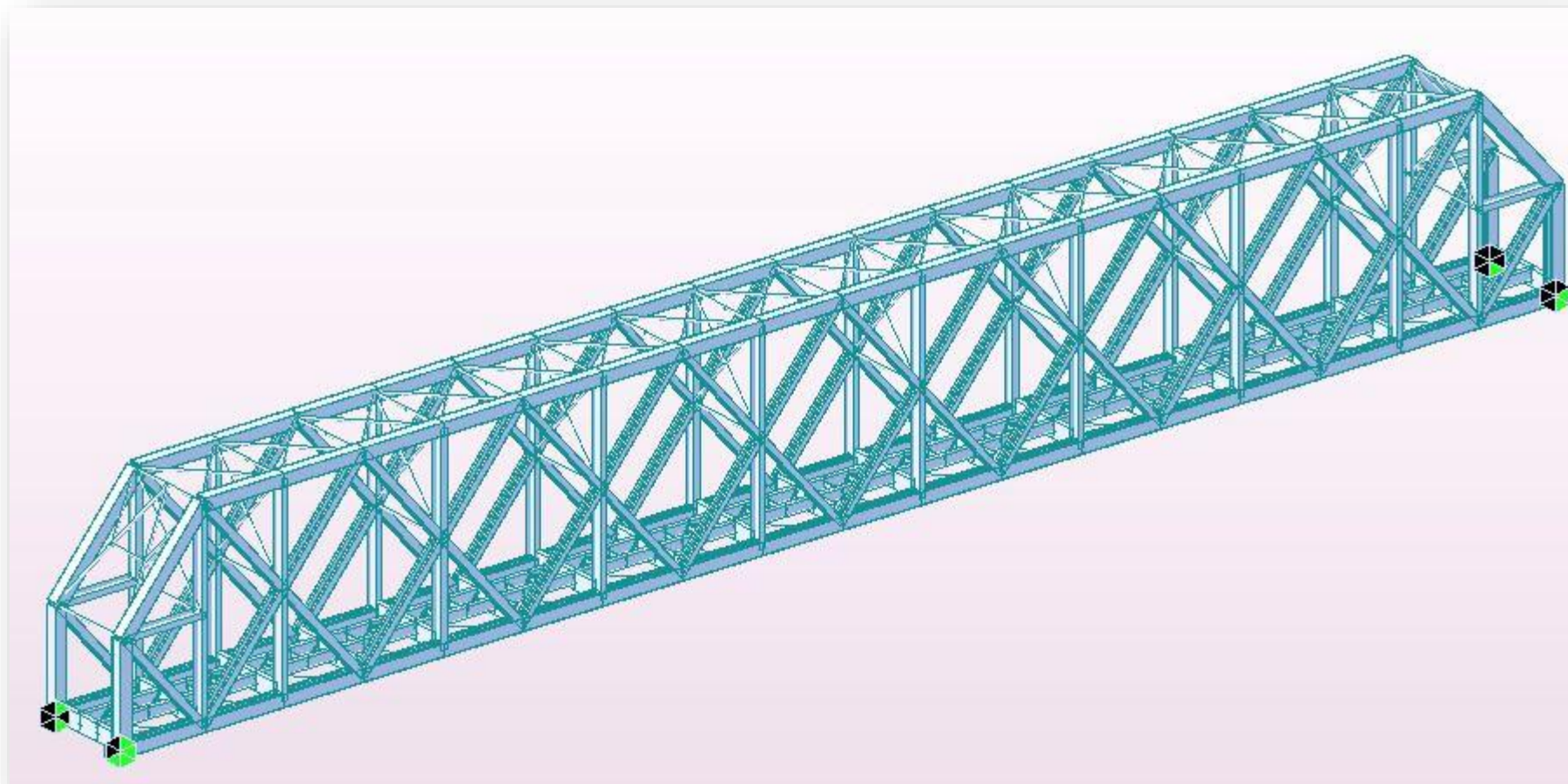
Our Projects - Technical Services

Sr. No.	Project	Client
3	Technical Consultants to APCO Infratech for Mahalaxmi Cable Stayed ROB, Mumbai. (90m+165m Asymmetric span)	APCO Infratech Ltd



Our Projects – Pre-bid Services

Sr. No.	Project	Client
4	Pre-bid Engineering Services For Construction Of New Rail Bridge (1 X 32.086m Web Steel Girder +33x122.0 M Web Steel Girder + 1x32.086 Web Steel Girder) With Sub-structure Of Double Line Track And Superstructure Of Single Line Track Across River Ganga Between Bikramshila And Katareah Station On New Railway Line Project Of East Central Railway.	Ashoka Buildcon Ltd.



Our Projects

S I	Project	Client	Authority	Category
5	Detailed Design of substructure for RUB (Br. No. 82/1) on Osmanabad and Latur line with RDSO standard superstructure of 1 X 106.7M OWG.	ISC Projects	Central railway	Detailed Design
6	Vibration Monitoring of Tunnel and Buildings at Bowbazar, Kolkata during the trial run of East West Metro In Between Esplanade-Sealdah Section for Kolkata Metro Rail Corporation ltd.	Kolkata Metro Rail Corporation ltd.	Kolkata Metro Rail Corporation ltd.	Health Monitoring
7	Proof Consultancy Services for Temporary structure of Balanced Cantilever Bridge at Nagpur Metro Reach 2A Viaduct	DP Jain	Maha Metro Rail Corporation	Proof Checking
8	Preparation of design and detailed drawings for temporary staging arrangements of bridges and buildings.(KHAIRAH I CHOPAN)	JHAJHARIA NIRMAN LIMITED	North Central Railway	Detailed Design
9	TE - Construction of Substructure including fabrication of Superstructure & its launching for Important Bridge no. 247 (10x61 m) and 287 (10x61.0 m) with Double D type well foundation for double line with RDSO 25 t axel loading standard over River Rapti at Railway kms 183.904 to 184.645 Km	Ram Kumar Contractor	North-Eastern-Railway	Pre-bid Engineering

Our Projects

S I	Project	Client	Authority	Category
10	Third-Party Independent Check of 92m Span Steel Truss (ROB) over Surat Railway Station which is part of “Development of Elevated Road at Multimodal Transportation Hub in Surat, Gujarat of Western Railway on EPC mode.	GHV	Western Railway	Proof Checking
11	Consultancy services for Sub soil Strengthening and design of Formation (Embankment) at Gangakhed Yard in connecion with Parli-Parbhani Doubling project.	Arunachalam Projects	Central Railway	Detailed Design
12	Six Lane Of Kagal-satara Of Nh-48(old NH-4)(package-ii) From Km 658.000 To Km 725.000 In The State Of Maharashtra To Be Executed On Bot (Toll) Mode Under Bharatmala Pariyojana	FPPMC	NHAI	Authority / PMC
13	Detailed Design Consultancy Services For Pre-Bid Activities Construction Of Elevated Road In Jodhpur City Portion From Shree Ram Baug Chauraha To Akhalyia Chauraha. (9.0Km Elevated Corridor)	ISC Projects	NHAI	Pre-bid Engineering
14	Nagercoil-Four Laning of left- over works including additional structures of Kerala/Tamil Nadu border to Kanyakumari from KM .43 / 000 to KM.96 / 714 of NH-47 in the State of Tamil Nadu under Engineering, procurement & construction (EPC)mode	FPPMC	NHAI	Authority / PMC
15	Construction of Four/Six Lane access-controlled expressway from junction with Pathankot-Gurdaspur Road (NH-54) near Balsua to junction with Hiranagar of DAK Expressway on HAM mode under Bharatmala Pariyojna in the state of Punjab and UT of J&K (Phase II-Package-14)	FPPMC	NHAI	Authority / PMC

Our Projects

S I	Project	Client	Authority	Category
16	Construction of Slip/Service road on either side at various locations (total length 25.140 Km (LHS+RHS), Flyover (2 x 25m) at Borivali Junction (Km. 528+600) & LVUP (1 x 15m) at Sherekarpada (Km. 528+830) on Pimpri Sado - Vadape section of NH-848 from Km. 460+900 to Km. 537+000 in the state of Maharashtra on EPC mode under NH(O)	NG Projects Limited	NHAI	Pre-bid Engineering
17	Design of 65.5m Segmental Box Girder for High Level Bridge Over Ghaghra River in connection with Widening and Strengthening to two Lane with Paved Shoulder/Four Lane with Paved shoulder Configuration from Km.61.500 of NH-727B near Nawalpur (Km.178.500 of Sonauli-Balia Marg Old SH-01) i.e. End Point of Salempur Bypass to Km 106.495 of NH 727B Near Sikanderpur under EPC mode in the State of Uttar Pradesh.	GOVINDAM CAD LLP	NHAI	Detailed Design
18	Consultancy services for Carrying out analysis of bridge and assistance for preparation of strengthening methodology for Major Bridge at CH 553 + 872	Trafiksol ITS Technologies Limited	NHAI	Repair & Rehabilitation
19	Preparation of GAD's, Detailed Design & Drawings of Structures for The NSK-27B and NSK-29B Highway	Fortress Infracon Ltd.	MSIDC	Detailed Design
20	Feasibility study and Detailed Project Report of 4 Laning from Km 0.00 to Km 58.450 of existing section of NH-103 (New NH-322) in the State of Bihar	FPPMC	NHAI	DPR Works

Our Projects

S I	Project	Client	Authority	Category
21	Proof checking and optimization of Structural Work design and construction of maintenance cum technology centres at 6 (six) location in Gujrat for NHSRCL Project	SCC Infra	NHSRCL	Proof Checking
22	Structural Design Consultancy for Construction of 12 M x 34 M (G+2) GIS + Control Room at Bapgaon Station	AB Corporation	MAHA TRANSCO	Detailed Design
23	Central hinged bearing load calculations for BORIM Bridge repair and bearing replacement works, GOA.	SANRACHNA	PWD GOA	Detailed Design
24	TE - Construction Of 4 Lane Elevated Corridor Including Approaches From Old Pune Naka To Boramani Naka On NH-65 In Solapur City On Hybrid Annuity Mode In The State Of Maharashtra (Km 0.050 To Km 9.710)	Ram Kumar Contractor	NHAI	Pre-bid Engineering
25	Design Consultancy for 110.0 m Steel Arch Bridge at Yari Road, Mumbai.	Construma Consultancy	BMC	Detailed Design

Our Experts

MR. UMESH DALVI :- Advisor (Structures)

- ❑ **Key Qualifications:** B-Tech in Civil-Structural Engineering (VJTI-1985)
- ❑ **Member of Indian Road Congress (IRC)**
- ❑ **Experience:** Over 30 + Years in Road / Rail Bridge Design, Elevated Corridors, and Urban Infrastructure.
- ❑ **Key roles and experience include:**
 - Over 19 years at CENTRAL RAILWAY as Sr. Design / Structural Engg.
 - Independent Design Consultancy for MTHL (Mumbai Trans Harbour Link) PKG-3
 - Detailed Design of Major Cable-Stayed Bridge at Bankot Creek, MH.
 - Project Supervision for Cable-Stayed Bridge across river Mandovi, Goa
 - Proof Checking of Design of Cable-Stayed Bridge at Kamla Park, MP.
 - Design of Delisle ROB at Lower Parel -Mumbai. (Skewed Truss)



Our Experts

MR. SUJIT G. RATHI :- Highway Expert

- ❑ **Experience:** Senior Highway Design Engineer, Pavement Specialist, and Road Safety Expert with over 15 years of expertise in highway and transportation design, road safety audits, and project management.
- ❑ **Software Proficiency:** geometric design, pavement design, and transportation planning using Civil 3D, MX Road, and AutoCAD.
- ❑ **Specializations :** Extensive knowledge of international and local standards including AASHTO, IRC, and SATCC.
- Skilled in road safety audits, BIM infrastructure modeling, and drainage design. Experienced in feasibility studies, DPR preparation, and BOQ calculations.
- ❑ **Additional Credentials:** Certified in road safety and pavement design. - Delivered road safety audits for projects under NHDP and Hybrid Annuity Models. - Memberships: MCIHT and IRC.



Our Experts

DR. R. SUNDERMOORTHY :- Advisor (Highway & Traffic)

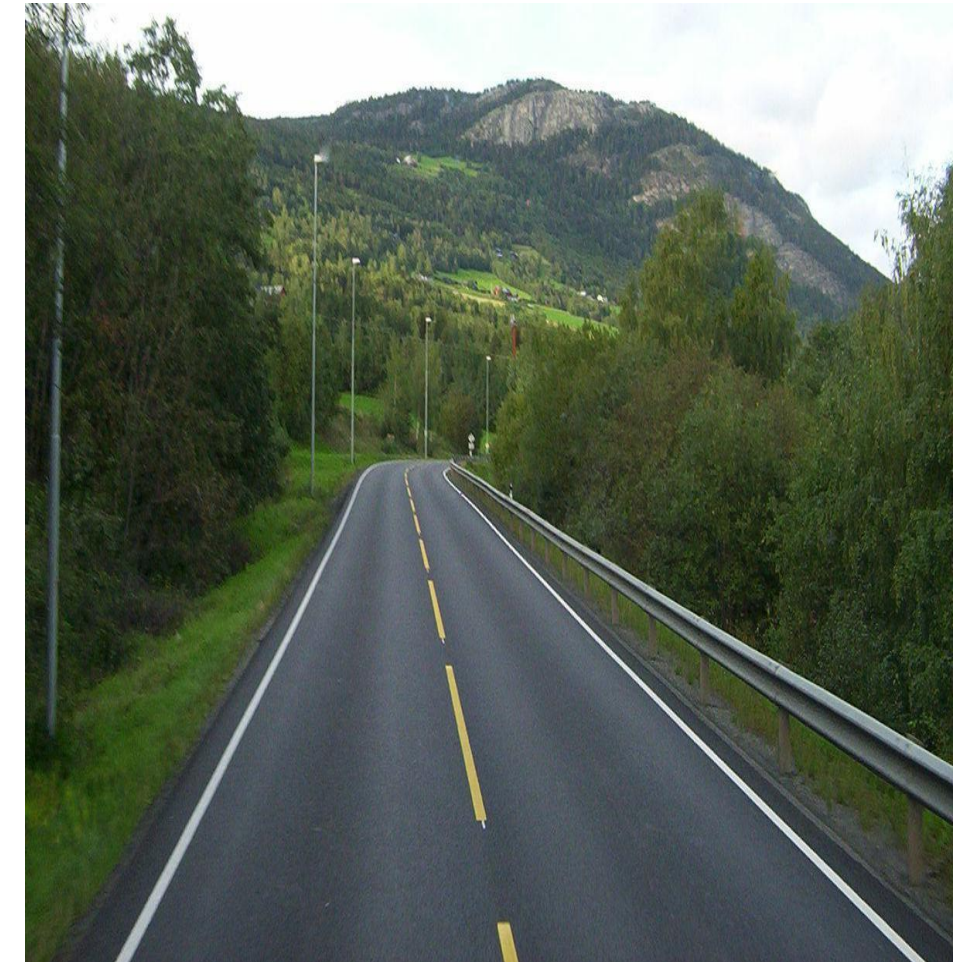
❑ Key Qualifications:

- B.E. in Civil Engineering
- M.E. in Urban Engineering
- Ph.D. in Transportation Engineering from IIT Bombay (2006)

❑ Over 35 years of professional experience in traffic, transportation, and highway planning and engineering.

❑ Key roles and experience include:

- **25 years at CIDCO Ltd.** (Govt. of Maharashtra) as Transportation Planner and Senior Engineer, involved in planning and monitoring transportation projects in: Navi Mumbai, Vasai-Virar Region & Various new towns across Maharashtra
- **Senior Consultant at LEA Associates:-** involved in the **design of road intersections** for Hyderabad Metro Rail corridors.
- **Chief General Manager at TPF Engineering Pvt. Ltd.,** leading the Transportation Department and working on major **highway and expressway projects** for over 5 years.



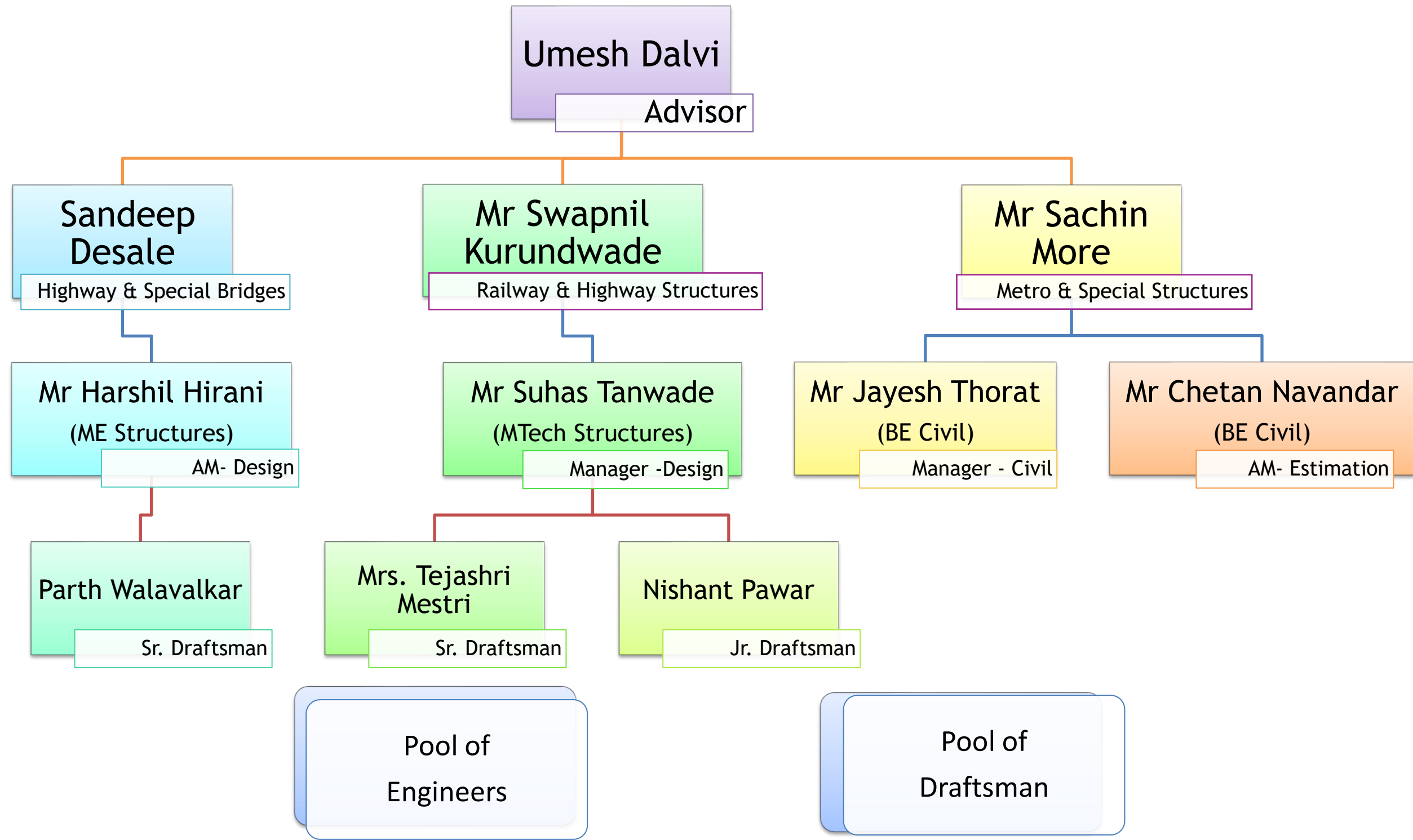
Our Experts

MR. NIRMIT CHOKSHI: (Health Monitoring Expert)

- ❑ **Experience:** 8+ years of experience in business development, project execution, and sales management in civil engineering consultancy.
- ❑ **ESI Services India LLP:** Senior Manager - Business Development, leading ATES and SMI projects, client relations, and team management. Achieved yearly targets consistently and handled prestigious accounts such as AFCONS, DMRC, and L&T. Aimil Ltd.: Headed the ATES & SMI Department in Vadodara, successfully implementing dam and tunnel instrumentation and utility surveys. -
- ❑ **Notable Projects:**
 - Instrumentation for metro and tunnel projects (Ahmedabad Metro, Dilip Buildcon).
 - Health monitoring and NDT surveys for government and private sectors.
 - Utility surveys and foundation health monitoring for wind turbine projects.



Organogram :-



Our Esteemed Clients

महा मेट्रो



MAHA METRO



ভাৰতীয় প্রযুক্তিবিদ্যা প্রতিষ্ঠান গুৱাহাটী
भारतीय प्रौद्योगिकी संस्थान गुवाहाटी
INDIAN INSTITUTE OF TECHNOLOGY GUWAHATI



FP Project Management
Formerly Frischmann Prabhu (India) Private Limited





ASTRUM Techno Consultants Pvt. Ltd.

From Vision To Reality, We Engineer It All

CONTACT US

Reg. office

**Office No. 610 & 611 The Landmark, Plot No. 26/A,
Sector 7 Kharghar, Navi Mumbai, 410210, Maharashtra**



www.astrumtechno.com



info@astrumtechno.com



022 3546 8338 / 022 3521 9633